


Emcer[®]
MARMO DI CERAMICHE

STYLISH SURFACES

FOREVER.

éSLAB
crafted differently

800 x 2400 MM



—
**WHY
CHOOSE
EMCER**

Emcer e-slab the leading manufacturer of e-slabs in India proved their existence in the World Ceramic Industry by achieving heights and reaching to the top in span of two years. Emcer proved that being a Quality and Research oriented organization is the key to success, which Emcer maintained from day one of the production of their e-slabs.

With their Mantra of success, Emcer managed to fill the void between design and quality by fulfilling the both criterias and created a benchmark in the world. With their highly qualified design and research team Emcer managed to achieve the peak by mapping every minute details of the products.

At Emcer -

" We believe in making the world more beautiful with best Quality Products and Innovative Designs".

**Management
Emcer**

www.emcer.in

éSLAB, the true testimony of modern architecture.

ESLAB allow architects to design a space ranging from simple flooring or coverings for large and small surfaces to object-based applications and furnishing accessories to enhance the world we live in. with eSLAB we have created a world where big is beautiful, with visually expanded spaces, fewer design and endless possibilities. on the one hand the eSLAB drastically reduces the amount of interruptions to the design unit, on the other the range of sub-multiples ensures great versatility for every and all needs.

éSLAB
crafted differently

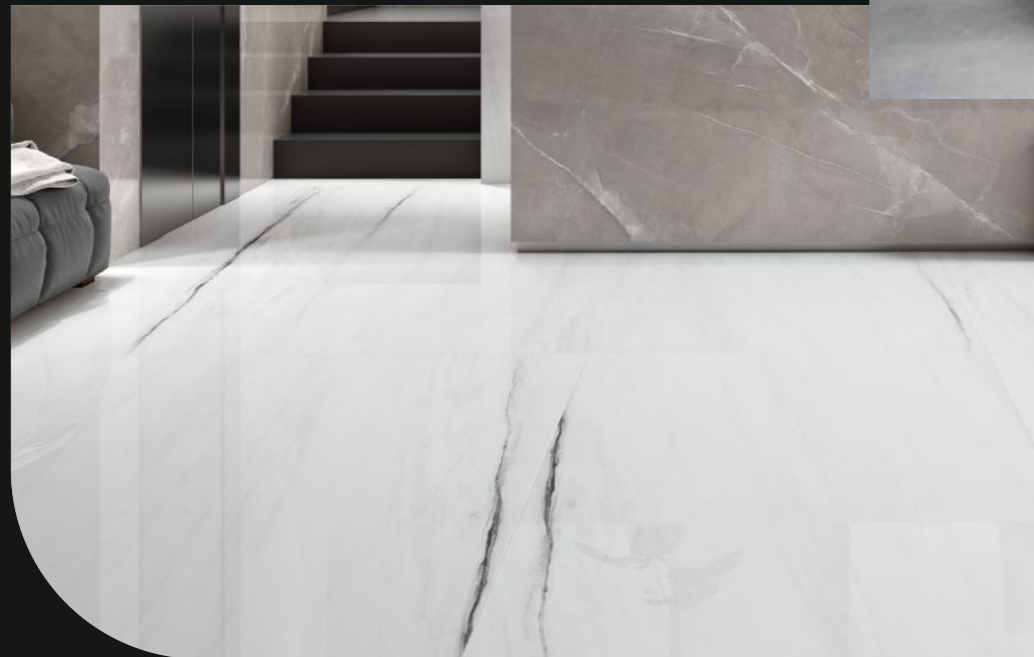


tecnología/
La technologie

Techno- logy

The fact that technology helps humanity transform, evolve and grow is not lost on us. Hence, we always value technology and encourage innovation. In fact, technology is our man Friday and innovation is our middle name.

Emcer is having strong research team for selecting high quality of raw materials from India & different part of world for producing high quality of SLAB. The state art of machinery with latest generation of technology of printing head. This machine can have capacity to print HD designs with natural aesthetical colors and hence it matches the natural stones and desired designs with colors. With this generation of machine, we can create different surface on slab, hence it will enhance its beauty.



800X2400MM

Emcer[®]
MARMO DI CERAMICHE

RAREST MARBLE NOT RARE ANYMORE!!

It is a new architectural concept that goes beyond a single slab: it allows designers to reinvent design criteria, giving them the maximum freedom and a minimum of limitations.

These slab tiles retain all their aesthetic and physical qualities: effortless manufacturing, polished and carved finish, in multiple colors and 9 millimeter thickness. Opening up a future of multi-level projects and unprecedented creative design. In this context, eSlab transcends its own designs, giving you complete freedom to customize colors and sizes in line with evolving style requirements.

The extraordinary designs are what make this ultra-refined product so precious and recognisable. Eslab is a surface of unparalleled elegance, appreciated for its particular brightness and exclusivity that make it ideal for the most refined creations.

eSLAB
crafted differently

Resistant to Staining



Resistente a las manchas /
Résistant aux taches

Impact Resistant



Resistente al impacto /
Résistant aux chocs

Acid Resistant



Resistente al ácido /
Résistant aux acides

Easy to Clean



Fácil de limpiar /
Facile à nettoyer

High MOR



Alta MOR /
MOR élevé

Thermal shock Resistant



Resistente al choque térmico /
Résistant aux chocs thermiques

Frost Resistant



Resistente a las heladas /
Résistant au gel

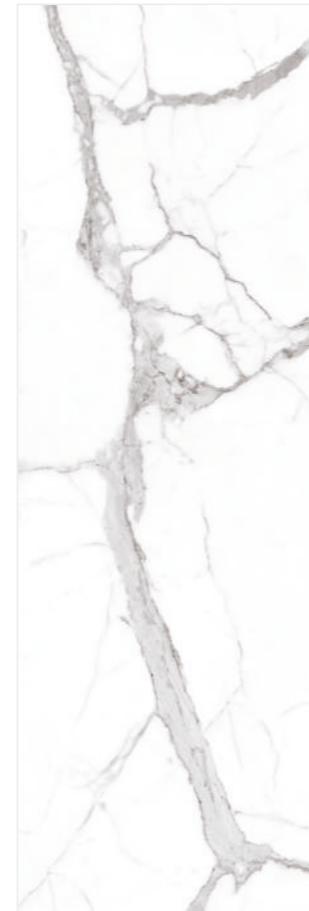
ALPS
STATUARIO

STONIC



800X2400MM - 32"X96"

SIZES	RANDOM	FINISH	THICKNESS
800X2400MM	1	DIGI MATT	6MM



- Easy to install
- Ecology & Sustainable
- Acid resistant
- Easy to clean
- Impact resistant
- Frost resistant
- Anti-slip
- Resistant to Staining
- High Modulus
- Resistant to Abrasion
- Thermal shock resistant
- Flexible Body

ALPS
STATUARIO

Dimension : 800X2400MM | Finish : DIGI MATT

éSLAB
crafted differently

Emcer®
MARMO DI CERAMICHE



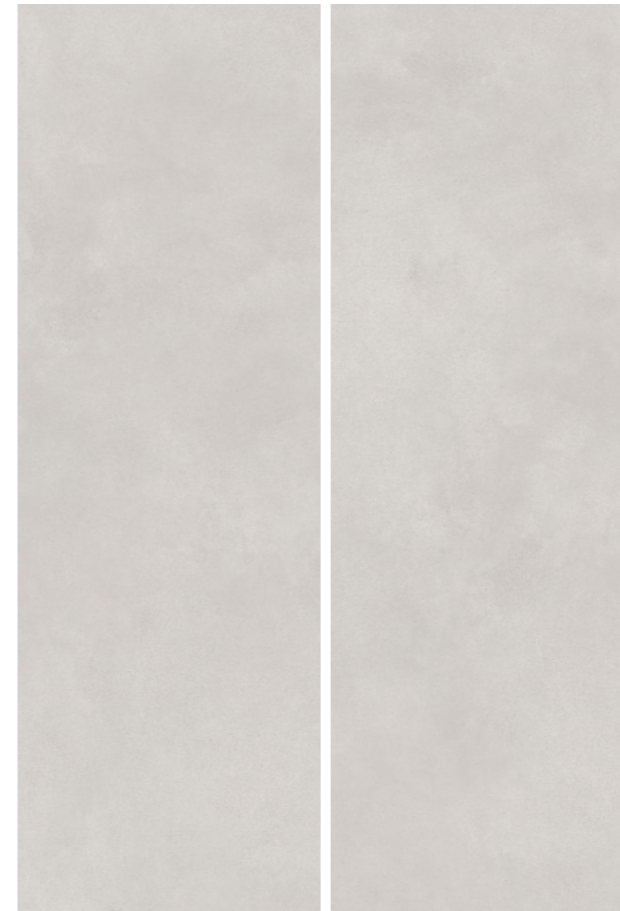
AZURE
BIANCO

STONIC



800X2400MM - 32"X96"

SIZES	RANDOM	FINISH	THICKNESS
800X2400MM	2	DIGI MATT	6MM



Emcer®
MARMO DI CERAMICHE

eSLAB
crafted differently

- Easy to install
- Ecology & Sustainable
- Acid resistant
- Easy to clean
- Impact resistant
- Frost resistant
- Anti-slip
- Resistant to Staining
- High Modulus
- Resistant to Abrasion
- Thermal shock resistant
- Flexible Body

AZURE BIANCO

Dimension : 800X2400MM | Finish : DIGI MATT

eSLAB
crafted differently

Emcer[®]
MARMO DI CERAMICHE



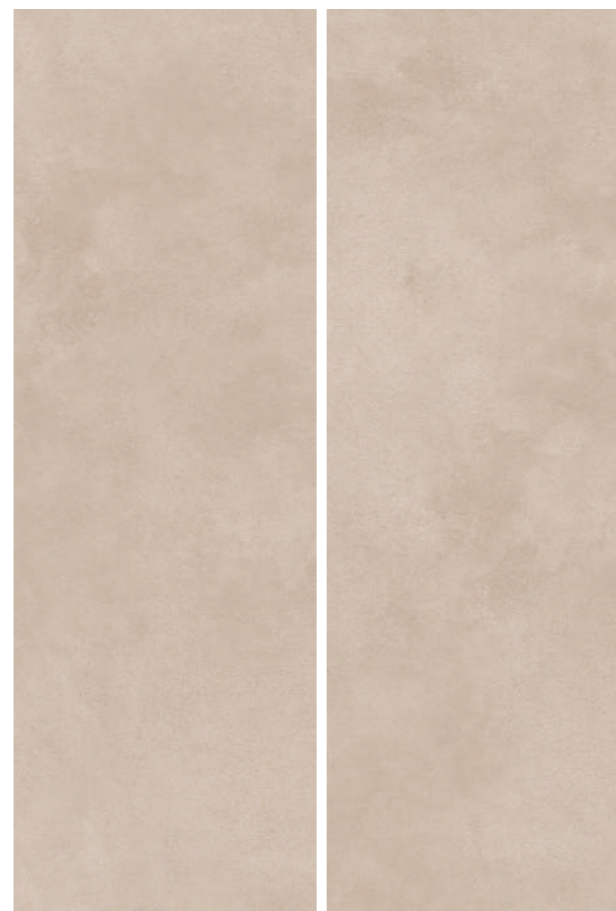
AZURE
BROWN

STONIC



800X2400MM - 32"X96"

SIZES	RANDOM	FINISH	THICKNESS
800X2400MM	2	DIGI MATT	6MM



Emcer®
MARMO DI CERAMICHE

eSLAB
crafted differently

- Easy to install
- Ecology & Sustainable
- Acid resistant
- Easy to clean
- Impact resistant
- Frost resistant
- Anti-slip
- Resistant to Staining
- High Modulus
- Resistant to Abrasion
- Thermal shock resistant
- Flexible Body

AZURE BROWN

Dimension : 800X2400MM | Finish : DIGI MATT

eSLAB
crafted differently

Emcer®
MARMO DI CERAMICHE



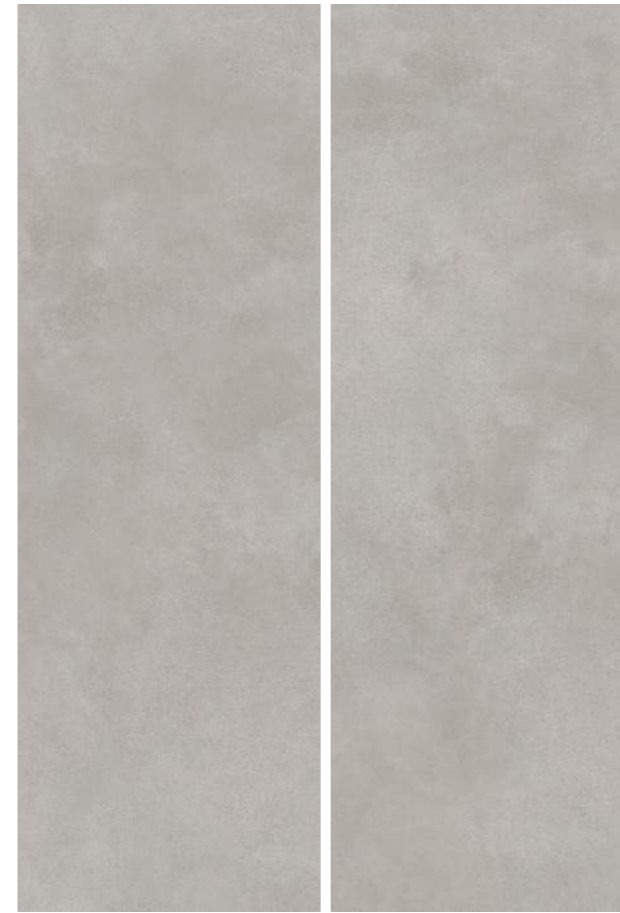
AZURE
GREY

STONIC



800X2400MM - 32"X96"

SIZES	RANDOM	FINISH	THICKNESS
800X2400MM	2	DIGI MATT	6MM



Emcer®
MARMO DI CERAMICHE

eSLAB
crafted differently

- Easy to install
- Ecology & Sustainable
- Acid resistant
- Easy to clean
- Impact resistant
- Frost resistant
- Anti-slip
- Resistant to Staining
- High Modulus
- Resistant to Abrasion
- Thermal shock resistant
- Flexible Body

AZURE
GREY

Dimension : 800X2400MM | Finish : DIGI MATT

eSLAB
crafted differently

Emcer®
MARMO DI CERAMICHE



AZURE
MOCA

STONIC



800X2400MM - 32"X96"

SIZES	RANDOM	FINISH	THICKNESS
800X2400MM	2	DIGI MATT	6MM



Emcer®
MARMO DI CERAMICHE

eSLAB
crafted differently

- Easy to install
- Ecology & Sustainable
- Acid resistant
- Easy to clean
- Impact resistant
- Frost resistant
- Anti-slip
- Resistant to Staining
- High Modulus
- Resistant to Abrasion
- Thermal shock resistant
- Flexible Body

AZURE
MOCA

Dimension : 800X2400MM | Finish : DIGI MATT

eSLAB
crafted differently

Emcer®
MARMO DI CERAMICHE



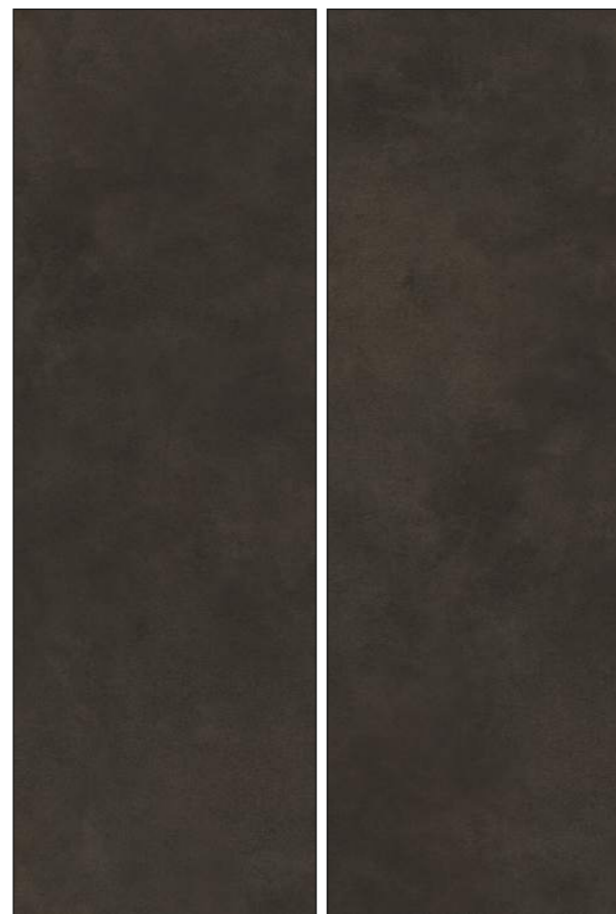
AZURE
NERO

STONIC



800X2400MM - 32"X96"

SIZES	RANDOM	FINISH	THICKNESS
800X2400MM	2	DIGI MATT	6MM



Emcer®
MARMO DI CERAMICHE

eSLAB
crafted differently

- Easy to install
- Ecology & Sustainable
- Acid resistant
- Easy to clean
- Impact resistant
- Frost resistant
- Anti-slip
- Resistant to Staining
- High Modulus
- Resistant to Abrasion
- Thermal shock resistant
- Flexible Body

AZURE NERO

Dimension : 800X2400MM | Finish : DIGI MATT

eSLAB
crafted differently

Emcer[®]
MARMO DI CERAMICHE



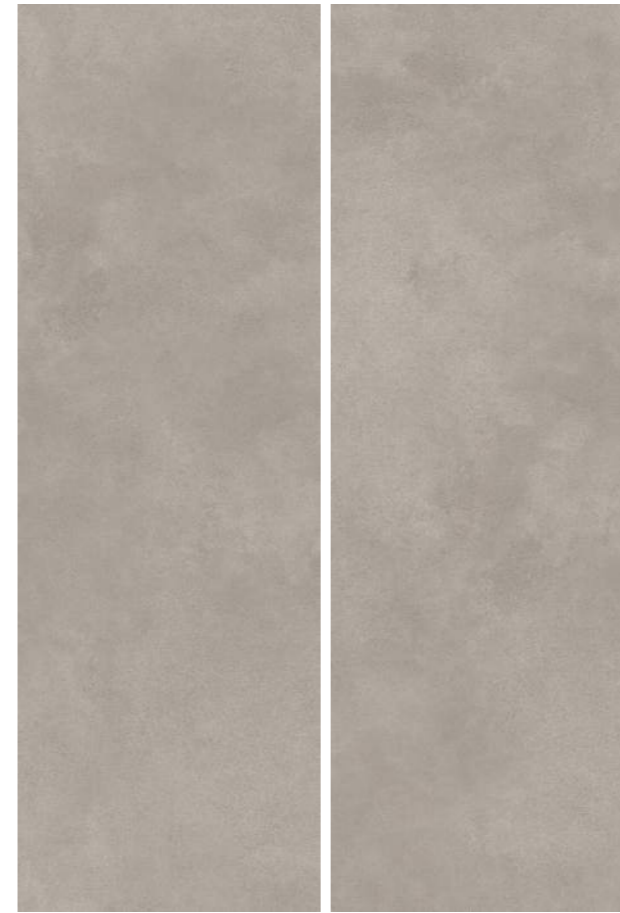
AZURE
SMOKE

STONIC



800X2400MM - 32"X96"

SIZES	RANDOM	FINISH	THICKNESS
800X2400MM	2	DIGI MATT	6MM



Emcer®
MARMO DI CERAMICHE

eSLAB
crafted differently

- Easy to install
- Ecology & Sustainable
- Acid resistant
- Easy to clean
- Impact resistant
- Frost resistant
- Anti-slip
- Resistant to Staining
- High Modulus
- Resistant to Abrasion
- Thermal shock resistant
- Flexible Body

AZURE SMOKE

Dimension : 800X2400MM | Finish : DIGI MATT

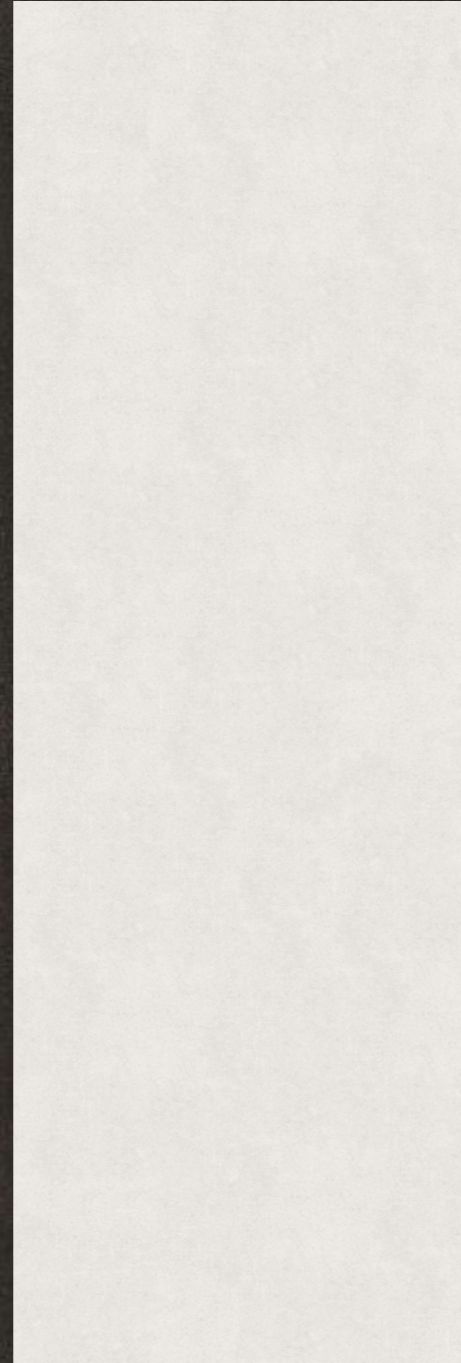
eSLAB
crafted differently

Emcer®
MARMO DI CERAMICHE



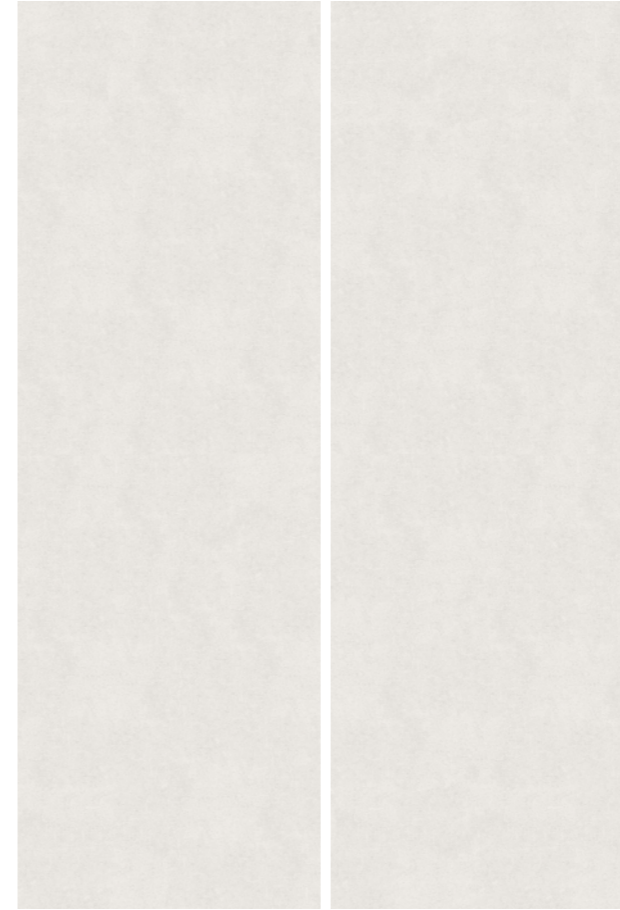
NORWAY
CEMENTO BIANCO

STONIC



800X2400MM - 32"X96"

SIZES	RANDOM	FINISH	THICKNESS
800X2400MM	2	DIGI MATT	6MM



Emcer®
MARMO DI CERAMICHE

eSLAB
crafted differently

- Easy to install
- Ecology & Sustainable
- Acid resistant
- Easy to clean
- Impact resistant
- Frost resistant
- Anti-slip
- Resistant to Staining
- High Modulus
- Resistant to Abrasion
- Thermal shock resistant
- Flexible Body

NORWAY CEMENTO BIANCO

Dimension : 800X2400MM | Finish : DIGI MATT

éSLAB
crafted differently

Emcer®
MARMO DI CERAMICHE



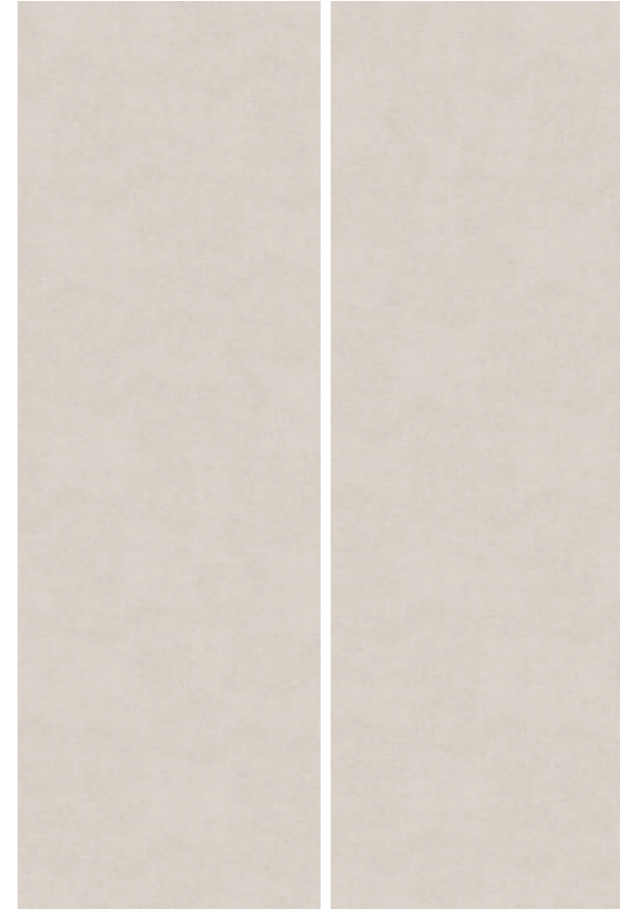
NORWAY
CEMENTO GREY

STONIC



800X2400MM - 32"X96"

SIZES	RANDOM	FINISH	THICKNESS
800X2400MM	2	DIGI MATT	6MM



- Easy to install
- Ecology & Sustainable
- Acid resistant
- Easy to clean
- Impact resistant
- Frost resistant
- Anti-slip
- Resistant to Staining
- High Modulus
- Resistant to Abrasion
- Thermal shock resistant
- Flexible Body

NORWAY CEMENTO GREY

Dimension : 800X2400MM | Finish : DIGI MATT

eSLAB
crafted differently

Emcer®
MARMO DI CERAMICHE



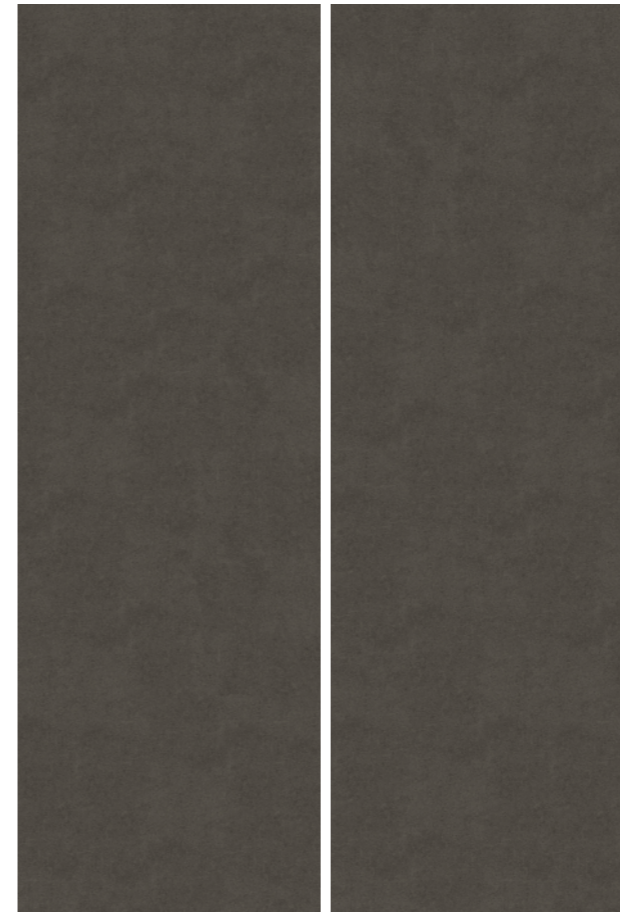
NORWAY
CEMENTO NERO

STONIC



800X2400MM - 32"X96"

SIZES	RANDOM	FINISH	THICKNESS
800X2400MM	2	DIGI MATT	6MM



- Easy to install
- Ecology & Sustainable
- Acid resistant
- Easy to clean
- Impact resistant
- Frost resistant
- Anti-slip
- Resistant to Staining
- High Modulus
- Resistant to Abrasion
- Thermal shock resistant
- Flexible Body

NORWAY CEMENTO NERO

Dimension : 800X2400MM | Finish : DIGI MATT

eSLAB
crafted differently

Emcer[®]
MARMO DI CERAMICHE



EXOTIC
BLACK

STONIC-e



800X2400MM - 32"X96"

SIZES	RANDOM	FINISH	THICKNESS
800X2400MM	1	DIGI MATT	6MM



Emcer[®]
MARMO DI CERAMICHE

eSLAB
crafted differently

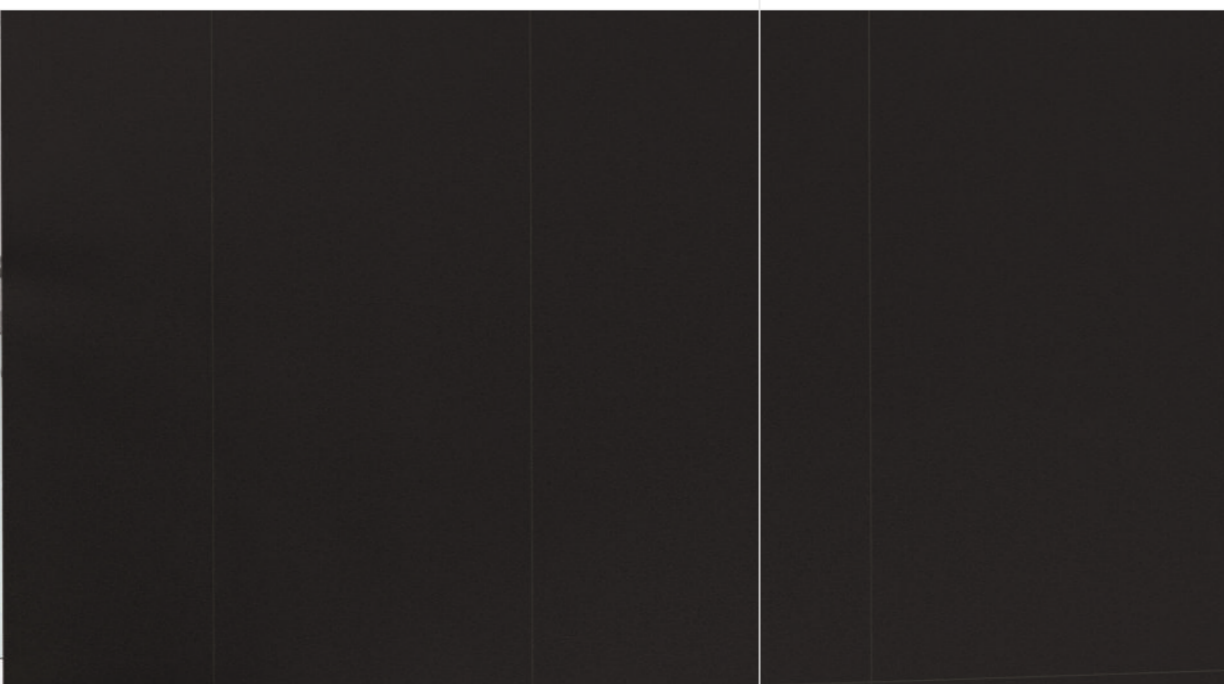
- Easy to install
- Ecology & Sustainable
- Acid resistant
- Easy to clean
- Impact resistant
- Frost resistant
- Anti-slip
- Resistant to Staining
- High Modulus
- Resistant to Abrasion
- Thermal shock resistant
- Flexible Body

EXOTIC BLACK

Dimension : 800X2400MM | Finish : DIGI MATT

eSLAB
crafted differently

Emcer[®]
MARMO DI CERAMICHE



EXOTIC
DARK GREY

STONIC-e



800X2400MM - 32"X96"

SIZES	RANDOM	FINISH	THICKNESS
800X2400MM	1	DIGI MATT	6MM



Emcer[®]
MARMO DI CERAMICHE

eSLAB
crafted differently

- Easy to install
- Ecology & Sustainable
- Acid resistant
- Easy to clean
- Impact resistant
- Frost resistant
- Anti-slip
- Resistant to Staining
- High Modulus
- Resistant to Abrasion
- Thermal shock resistant
- Flexible Body

EXOTIC
DARK GREY

Dimension : 800X2400MM | Finish : DIGI MATT

eSLAB
crafted differently

Emcer®
MARMO DI CERAMICHE



EXOTIC
GREY

STONIC



800X2400MM - 32"X96"

SIZES	RANDOM	FINISH	THICKNESS
800X2400MM	1	DIGI MATT	6MM



Emcer®
MARMO DI CERAMICHE

eSLAB
crafted differently

- Easy to install
- Ecology & Sustainable
- Acid resistant
- Easy to clean
- Impact resistant
- Frost resistant
- Anti-slip
- Resistant to Staining
- High Modulus
- Resistant to Abrasion
- Thermal shock resistant
- Flexible Body

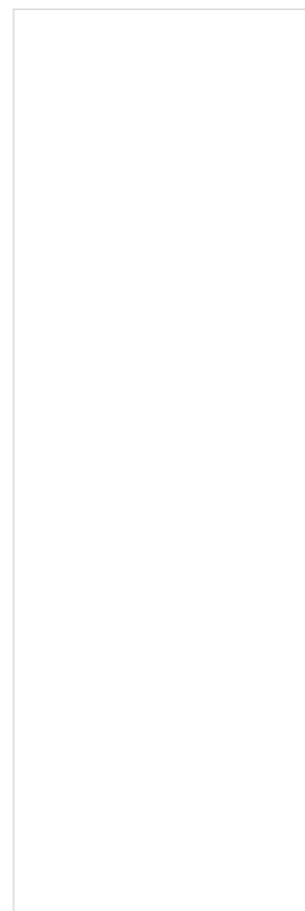
EXOTIC
WHITE

STONIC



800X2400MM - 32"X96"

SIZES	RANDOM	FINISH	THICKNESS
800X2400MM	1	DIGI MATT	6MM



Emcer®
MARMO DI CERAMICHE

eSLAB
crafted differently

- Easy to install
- Ecology & Sustainable
- Acid resistant
- Easy to clean
- Impact resistant
- Frost resistant
- Anti-slip
- Resistant to Staining
- High Modulus
- Resistant to Abrasion
- Thermal shock resistant
- Flexible Body

EXOTIC WHITE

Dimension : 800X2400MM | Finish : DIGI MATT

eSLAB
crafted differently

Emcer®
MARMO DI CERAMICHE



SPARKLE EXOTIC
BLACK

STONIC-e



800X2400MM - 32"X96"

SIZES	RANDOM	FINISH	THICKNESS
800X2400MM	1	DIGI MATT	6MM



- Easy to install
- Ecology & Sustainable
- Acid resistant
- Easy to clean
- Impact resistant
- Frost resistant
- Anti-slip
- Resistant to Staining
- High Modulus
- Resistant to Abrasion
- Thermal shock resistant
- Flexible Body

SPARKLE EXOTIC BLACK

Dimension : 800X2400MM | Finish : DIGI MATT

eSLAB
crafted differently

Emcer[®]
MARMO DI CERAMICHE



SPARKLE EXOTIC
DARK GREY

STONIC-e



800X2400MM - 32"X96"

SIZES	RANDOM	FINISH	THICKNESS
800X2400MM	1	DIGI MATT	6MM



- Easy to install
- Ecology & Sustainable
- Acid resistant
- Easy to clean
- Impact resistant
- Frost resistant
- Anti-slip
- Resistant to Staining
- High Modulus
- Resistant to Abrasion
- Thermal shock resistant
- Flexible Body

SPARKLE EXOTIC
DARK GREY

Dimension : 800X2400MM | Finish : DIGI MATT



SPARKLE EXOTIC GREY

STONIC



800X2400MM - 32"X96"

SIZES	RANDOM	FINISH	THICKNESS
800X2400MM	1	DIGI MATT	6MM



Emcer[®]
MARMO DI CERAMICHE

eSLAB
crafted differently

- Easy to install
- Ecology & Sustainable
- Acid resistant
- Easy to clean
- Impact resistant
- Frost resistant
- Anti-slip
- Resistant to Staining
- High Modulus
- Resistant to Abrasion
- Thermal shock resistant
- Flexible Body

SPARKLE EXOTIC
GREY

Dimension : 800X2400MM | Finish : DIGI MATT



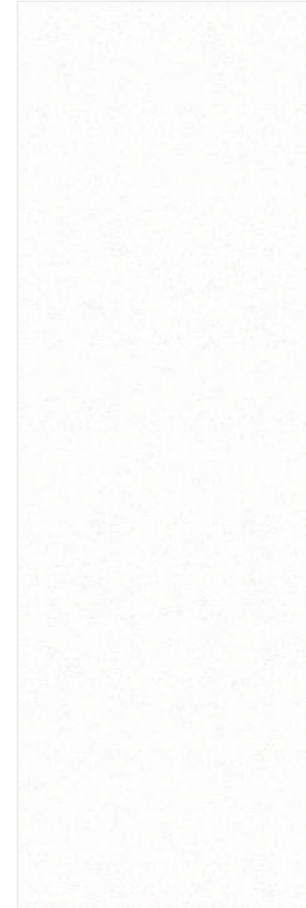
SPARKLE EXOTIC WHITE

STONIC



800X2400MM - 32"X96"

SIZES	RANDOM	FINISH	THICKNESS
800X2400MM	1	DIGI MATT	6MM



Emcer[®]
MARMO DI CERAMICHE

eSLAB
crafted differently

- Easy to install
- Ecology & Sustainable
- Acid resistant
- Easy to clean
- Impact resistant
- Frost resistant
- Anti-slip
- Resistant to Staining
- High Modulus
- Resistant to Abrasion
- Thermal shock resistant
- Flexible Body

ARTIS
GREEN

BLEND



800X2400MM - 32"X96"

SIZES	RANDOM	FINISH	THICKNESS
800X2400MM	4	CARVING	6MM



Emcer®
MARMO DI CERAMICHE

eSLAB
crafted differently

- Easy to install
- Ecology & Sustainable
- Acid resistant
- Easy to clean
- Impact resistant
- Frost resistant
- Anti-slip
- Resistant to Staining
- High Modulus
- Resistant to Abrasion
- Thermal shock resistant
- Flexible Body

ARTIS
GREY

BLEND



800X2400MM - 32"X96"

SIZES	RANDOM	FINISH	THICKNESS
800X2400MM	4	CARVING	6MM



Emcer®
MARMO DI CERAMICHE

eSLAB
crafted differently

- Easy to install
- Ecology & Sustainable
- Acid resistant
- Easy to clean
- Impact resistant
- Frost resistant
- Anti-slip
- Resistant to Staining
- High Modulus
- Resistant to Abrasion
- Thermal shock resistant
- Flexible Body

ARTIS
ICE

BLEND



800X2400MM - 32"X96"

SIZES	RANDOM	FINISH	THICKNESS
800X2400MM	4	CARVING	6MM



Emcer®
MARMO DI CERAMICHE

eSLAB
crafted differently

- Easy to install
- Ecology & Sustainable
- Acid resistant
- Easy to clean
- Impact resistant
- Frost resistant
- Anti-slip
- Resistant to Staining
- High Modulus
- Resistant to Abrasion
- Thermal shock resistant
- Flexible Body

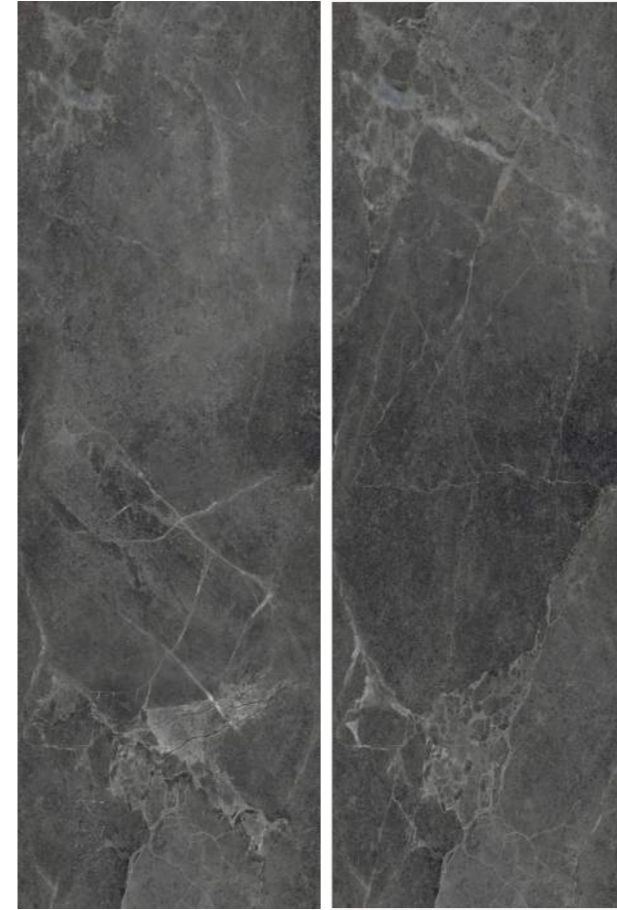
ATHARVA
BLACK

BLEND



800X2400MM - 32"X96"

SIZES	RANDOM	FINISH	THICKNESS
800X2400MM	2	CARVING	6MM



eSLAB
crafted differently

- Easy to install
- Ecology & Sustainable
- Acid resistant
- Easy to clean
- Impact resistant
- Frost resistant
- Anti-slip
- Resistant to Staining
- High Modulus
- Resistant to Abrasion
- Thermal shock resistant
- Flexible Body

ATHARVA SMOKE

BLEND



800X2400MM - 32"X96"

SIZES	RANDOM	FINISH	THICKNESS
800X2400MM	2	CARVING	6MM



Emcer[®]
MARMO DI CERAMICHE

eSLAB
crafted differently

- Easy to install
- Ecology & Sustainable
- Acid resistant
- Easy to clean
- Impact resistant
- Frost resistant
- Anti-slip
- Resistant to Staining
- High Modulus
- Resistant to Abrasion
- Thermal shock resistant
- Flexible Body

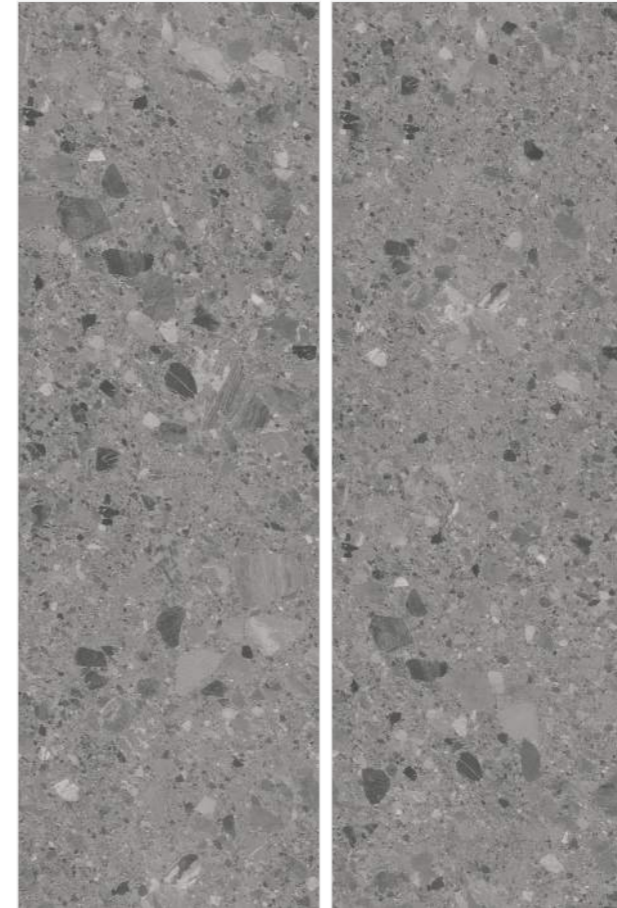
CHEPPO
DARK GREY

BLEND



800X2400MM - 32"X96"

SIZES	RANDOM	FINISH	THICKNESS
800X2400MM	2	CARVING	6MM



Emcer®
MARMO DI CERAMICHE

eSLAB
crafted differently

- Easy to install
- Ecology & Sustainable
- Acid resistant
- Easy to clean
- Impact resistant
- Frost resistant
- Anti-slip
- Resistant to Staining
- High Modulus
- Resistant to Abrasion
- Thermal shock resistant
- Flexible Body

CHEPPO
LIGHT GREY

BLEND



800X2400MM - 32"X96"

SIZES	RANDOM	FINISH	THICKNESS
800X2400MM	2	CARVING	6MM



Emcer®
MARMO DI CERAMICHE

eSLAB
crafted differently

- Easy to install
- Ecology & Sustainable
- Acid resistant
- Easy to clean
- Impact resistant
- Frost resistant
- Anti-slip
- Resistant to Staining
- High Modulus
- Resistant to Abrasion
- Thermal shock resistant
- Flexible Body

DOLCE
WHITE

BLEND



800X2400MM - 32"X96"

SIZES	RANDOM	FINISH	THICKNESS
800X2400MM	4	CARVING	6MM



Emcer®
MARMO DI CERAMICHE

eSLAB
crafted differently

- Easy to install
- Ecology & Sustainable
- Acid resistant
- Easy to clean
- Impact resistant
- Frost resistant
- Anti-slip
- Resistant to Staining
- High Modulus
- Resistant to Abrasion
- Thermal shock resistant
- Flexible Body

ROYAL
BEIGE

BLEND



800X2400MM - 32"X96"

SIZES	RANDOM	FINISH	THICKNESS
800X2400MM	4	CARVING	6MM



Emcer®
MARMO DI CERAMICHE

eSLAB
crafted differently

- Easy to install
- Ecology & Sustainable
- Acid resistant
- Easy to clean
- Impact resistant
- Frost resistant
- Anti-slip
- Resistant to Staining
- High Modulus
- Resistant to Abrasion
- Thermal shock resistant
- Flexible Body

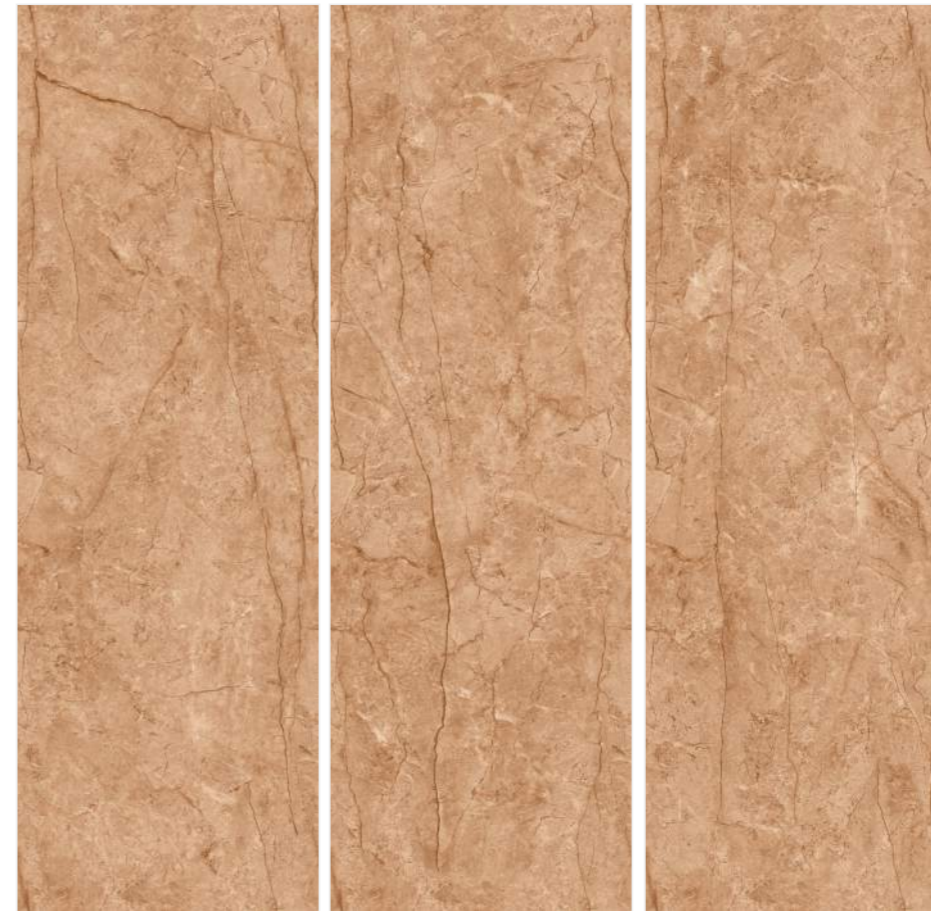
ROYAL
COPPER

BLEND



800X2400MM - 32"X96"

SIZES	RANDOM	FINISH	THICKNESS
800X2400MM	4	CARVING	6MM



Emcer®
MARMO DI CERAMICHE

eSLAB
crafted differently

- Easy to install
- Ecology & Sustainable
- Acid resistant
- Easy to clean
- Impact resistant
- Frost resistant
- Anti-slip
- Resistant to Staining
- High Modulus
- Resistant to Abrasion
- Thermal shock resistant
- Flexible Body

ROYAL
GREY

BLEND



800X2400MM - 32"X96"

SIZES	RANDOM	FINISH	THICKNESS
800X2400MM	4	CARVING	6MM



Emcer®
MARMO DI CERAMICHE

eSLAB
crafted differently

- Easy to install
- Ecology & Sustainable
- Acid resistant
- Easy to clean
- Impact resistant
- Frost resistant
- Anti-slip
- Resistant to Staining
- High Modulus
- Resistant to Abrasion
- Thermal shock resistant
- Flexible Body

ESLAB INSTALLATION INSTRUCTION

Follow the instruction for better and smooth execution of Emcer eSlab Products.

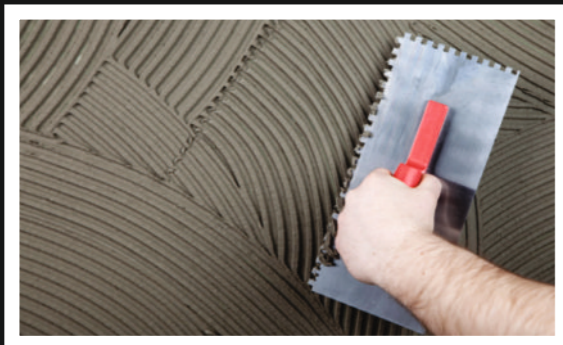


01 SURFACE PREPARATION

Apply cement mortar bedding on the surface and spread the entire mortar evenly. For flattened surface approximately 9mm thick cement mortar bedding is preferred.

02 DRYING PROCESS

The drying time of cement mortar bedding is approximately 48 hours, as it will exceed the contraction and expansion of feature of cement.



03 ESLAB LAYING PROCESS

Apply approximately 10mm thick tile fixing adhesive on the prepared cement bed, spread the same by using metal comb (12mm) to the entire surface (Refer the image). This feature will allow to be fixed without any air pocket after installation.

The Same Method has to followed for applying the tile fixing adhesive on the back of the slab for 10mm, while holding the slab on its length side. Then, the adhesive has to be combed in the same way as done on the floor.



04 ESLAB HANDLING

eSlab can be properly handled and lifted by Vacuum cups. Vacuum cups are usually used to lift glasses, it can be fixed on the surface of polished tile, to lift it to the exact area of the fixing. (May not very effective for satin and matt surfaces.)

Once the slab is laid, the same has to be hammered by soft wooden base hammer to ensure proper laying and fixing.



05 ESLAB CUTTING AND HANDLING

Use diamond tools which are generally use to cut glasses, for cutting any surface of eSlab. First, a line has to be drawn on the surface pressing the tool considerably to ensure a deep cut mark line and this can be used till the slab is cut deep to the level of 1 to 2mm and then can be cut with a proper cutting tool for cutting the 9mm thick body of the slab. Cutting systems are also available with companies manufacturing such systems.

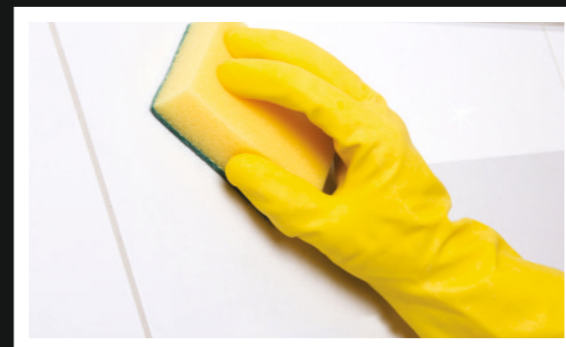
06 ESLAB CUTTING AND DRILLING METHODS



ESLAB CARE AND MAINTENANCE

These are the so-called final cleaning operations: this is the most important step, as it influences the results of the subsequent use of the product. Its purpose is to remove any trace or residue of foreign matter from the surface of the slabs. If you have used a cement-based sealant during installation, once the grout has dried, Emcer recommends carrying out the following operations:

- Remove any coarse dirt using a vacuum cleaner;
- Wet the floor with clean water in order to soak and protect the joints against the corrosive action of the detergent;
- Clean using a suitable acid detergent, which can be applied by hand (with a clean cloth) or with a machine (a single-brush machine with medium, non-abrasive bristles or a high-pressure water cleaner);
- Soak up the cleaning solution with a clean cloth or a suitable vacuum cleaner;
- Thoroughly rinse surfaces with clean, warm water to neutralise the action of the detergent;
- Remove any build-up by scraping it off;
- If needed, clean the surface again with the single-brush machine, using a diluted neutral or alkaline detergent, then rinse using clean warm water and dry.
- If an epoxy sealant has been used during installation of the product, given the chemical nature of such product, any remaining residue on the porcelain tile's surface should be removed before the grout has hardened completely and carefully follow the instructions supplied by the manufacturer.



Technical Specification

CHARACTERISTICS	STANDARD AS PER ISO-13006/En14411 GROUP	VALUES	TEST METHOD
REGULATORY PROPERTIES			
Deviation in Lenth & Width	0.50%	0.20%	ISO - 10545-2
Deviation in Thickness	0.50%	0.50%	ISO - 10545-2
Straightness of Sides	0.50%	0.20%	ISO - 10545-2
Rectangularity	0.50%	0.20%	ISO - 10545-2
Surface Flatness	0.50%	0.20%	ISO - 10545-2
Color Difference	Unaltered	No Change	ISO - 10545-16
Glossiness	As per Mfg.	>90%	Glossmeter
STRUCTURAL PROPERTIES			
Water Absorption	<0.05%	<0.05%	ISO - 10545-3
Apparent Density	>2.00 g/cc	>2.10 g/cc	DIN 51082
MASSIVE MECHANICAL PROPERTIES			
Modulus of Repture	Min 35N/MM2	Min 40N/MM2	ISO - 10545-4
Breaking Strength	Min. 1300 N	Min. 2000 N	ISO - 10545-4
Impact Resistance	As per Mfg.	Min. 0.55	ISO - 10545-5
SURFACE MECHANICAL PROPERTIES			
Surface Abrasion Resistance	As per Mfg.	Min. class 3	ISO - 10545-7
Moh's Hardness	As per Mfg.	Min. class 4	EN 101
THERMO HYGROMETRIC PROPERTIES			
Frost Resistance	No Damage	No Damage	ISO - 10545-12
Thermal Shock Resistance	No Damage	No Damage	ISO - 10545-09
Moisture Expansion	Nil	Nil	ISO - 10545-10
Thermal Expansion	Max 9.0x10 ⁻⁶	Max 6.5x10 ⁻⁶	ISO - 10545-08
Crazing Resistance	As per Mfg.	Min 10 Cycle	ISO - 10545-11
CHEMICAL PROPERTIES			
Chemical Resistance	No Damage	No Damage	ISO - 10545-13
Stain Resistance	Resistant	Resistant	ISO - 10545-14
SAFETY PROPERTIES			
Slip Resistance	As per Mfg.	>0.40	ISO - 10545-17
Fire Resistance	As per Mfg.	Fire Proof	N.A.

Packing Detail

SIZE (in mm)	THICKNESS APPROX	PIECES / PER BOX	COVERAGE AREA IN SQ. FT	BOX WEIGHT (APPROX.)
800X2400MM	6MM	2	41.33	54 KGS.



EMCER TILES PVT. LTD.

HEAD OFFICE

Emcer House, C Block, Westgate, Near YMCA Club,
S.G. Highway, Ahmedabad - 380015, (Gujarat) INDIA.

EMCER FACTORY

Emcer Premises, Survey No.: 117 P2 & P3, Opp. Sanford Vitrified,
Sartanpur Road, Ta.: Wankaner, Dist.: Morbi - 363621, (Gujarat) INDIA.

EMCER DELHI

Emcer House, D 19, Mayapuri Industrial Area Phase 2,
New Delhi - 110064, INDIA.

EMCER KOLKATA

5, Paschim Chaubhaga, Arupota, Post Dalanda,
Besides Mercedes Service Center, Kolkata - 700105, (West Bengal) INDIA.